



TRIFASICOS

Y2 Carcasa de Hierro

MOTORES

Tu fuerza industrial



MEC
MOTORES



TRIFÁSICOS

Y2 Carcasa de Hierro

Descripción

Estos motores de eficiencia estándar, poseen una alta resistencia a la corrosión y alto poder de torque en el arranque. Por su robustez, es utilizado para acoplamientos pesados, compresores, bombas y máquinas de procesos.

Características

- Grado de protección: IP55
- Tensiones Nominales:
220/380V hasta 4 Kw
380/660V a partir de 4Kw
- Formas constructivas B3-B35
- Potencias: desde 0.16 HP hasta 430 HP
- Rotor Jaula de Ardilla/Aluminio Inyectado
- Reten en las tapas
- Clase de aislamiento F
- Cuerpo desde 63 a 355
- Carcasa de hierro
- Temperatura ambiente entre 15° C y 40° C
- Placa de conexiones 6 terminales
- Termistores PTC
- Apto para variadores
- Polos 2-4-6-8-10
- Velocidades 3000-1500-1000-750-600 RPM
- Resistencia a la corrosión
- Certificación eléctrica según Normas IEC
- Chavetas y protección provistas

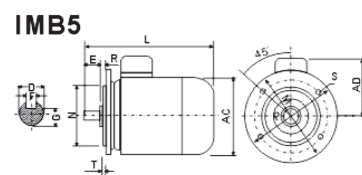
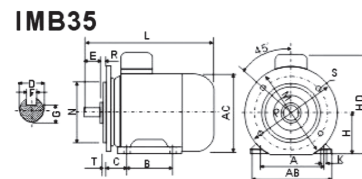
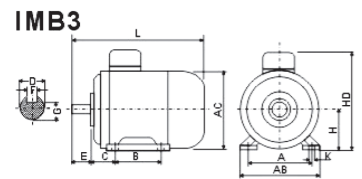


TABLA DE RODAMIENTO			
Carcasa	Polos	Rodamiento Delantero	Rodamiento Trasero
63	2-4	62012ZC3	62012ZC3
71	2-6	62022ZC3	62022ZC3
80	2-8	62042ZC3	62042ZC3
90	2-8	62052ZC3	62052ZC3
100	2-8	62062ZC3	62062ZC3
112	2-8	63062ZC3	63032ZC3
132	2-8	63082ZC3	63082ZC3
160	2	63092ZC3	63092ZC3
	4-8		
180	2	6311C3	6311C3
	4-8		
200	2	6312C3	6312C3
	4-8		
225	2	6313C3	6313C3
	4-8		
250	2	6314C3	6314C3
	4-8		
280	2	6314C3	6314C3
	4-8	6317C3	6317C3
	2	6317C3	6317C3
315	4-10	NU319C3	6319C3
	2	6319C3	6319C3
355	4-10	NU322C3	6322C3

Carcasa	Polos	Dimensiones Montajes														Dimensiones Brida										
		A	A/2	B	C	D	E	F	G	H	K	M	N	P	R*	S	T	Agujeros	AB	AC	AD	HD	L	DH		
63	FF115	2, 4	100	50	80	40	11	23	4	8,5	63	115	95	140				3		135	130	70	180	230	M4x12	
71	FF130	2, 4, 6	112	56	90	45	14	30	5	11	71	130	110	160			10		150	145	80	195	255	M5x12		
80			125	62,2	100	50	19	40	6	15,5	80								165	175	145	220	295	M6x16		
90S	FF165		140	70	100	56	24	50		20	90	165	130	200				12	3,5	180	195	155	250	320	M8x19	
90L			140	70	125	56	24	50		20	90	165	130	200						180	195	155	250	345	M8x19	
100L			160	80	140	63	28	60		24	100	215	180	250						205	215	180	270	385	M10x22	
112M	FF215		190	95	140	70	28	60		24	112							15	4	230	240	190	300	400	M10x22	
132S	FF265	2, 4, 6, 8	216	108	140	89	38	80	10	33	132	265	230	300						270	275	210	345	470	M12x28	
132M			216	108	178	89	38	80	10	33	132	265	230	300						270	275	210	345	510	M12x28	
160M			254	127	210	108	42		12	37	160									320	330	255	420	670	M16x36	
160L	FF300		254	127	254	108	42		12	37	160									320	330	255	420	670	M16x36	
180M			279	139,5	241	121	48	110		14	42,5	180								355	380	280	455	700	M16x36	
180L			279	139,5	279	121	48	110		14	42,5	180								355	380	280	455	740	M16x36	
200L	FF350		318	159	305	133	55		16	49	200	350	300	400				0		395	420	305	505	770	M20x42	
225S		4, 8			286	60	140	18	53																815	M20x42
225M	FF400	2	356	178	311	149	55	110	16	49	225	400	350	450				19	5	435	470	335	560	820	M20x42	
		4, 6, 8			311	149	55	110	16	49	225	400	350	450											845	M20x42
250M		2	406	203	349	168				18		250								490	510	370	615	910		M20x42
		4, 6, 8			349	168				18		250													910	M20x42
280S	FF500	2			368	65	58			24		500	450	550											985	M20x42
		4, 6, 8	457	228,5	368	65	58			24		500	450	550						550	580	410	680		1035	M20x42
280M		2			419	75	140	20	67,5																1035	M20x42
		4, 6, 8			419	75	140	20	67,5																1035	M20x42
315S		2			406	65	18	58																	1160	M20x42
		4, 6, 8, 10			406	65	18	58																	1160	M20x42
315M	FF600	2	508	254	457	216	65	140	18	58	315	600	550	660						365	645	530	845		1190	M20x42
		4, 6, 8, 10			457	216	65	140	18	58	315	600	550	660											1190	M20x42
315L		2			508	80	170	22	71																1300	M20x42
		4, 6, 8, 10			508	80	170	22	71																1300	M20x42
355M		2			560	75	140	20	67,5																1500	M20x42
		4, 6, 8, 10			560	75	140	20	67,5																1500	M20x42
355L	FF740	2	610	305	630	254	75	140	20	67,5	355	740	680	800						730	710	655	1010		1530	M20x42
		4, 6, 8, 10			630	254	75	140	20	67,5	355	740	680	800											1530	M20x42



Bv. Segui 2707-Rosario-Tel. 0341 434 0271 / 431 9293 / 156 132199
e-mail: cristian@rtransmisiones.com.ar leonardo@rtransmisiones.com.ar

Modelo	Potencia (kw) (hp)		Voltaje (V)	Corriente (A)	Velocidad (r.p.m.)	EFF (%)	Factor Potencia	Rotor Cerrado	Rotor Cerrado	Max Cupla
								Cupla	Corriente	
3000 RPM (2 polos)										
Y2-631-2	0.18	0.25	380	0.52	2825	65.0	0.80	2.2	5.5	2.2
Y2-632-2	0.25	0.33	380	0.69	2840	68.0	0.81	2.2	5.1	2.2
Y2-711-2	0.37	0.5	380	0.99	2840	69.0	0.81	2.2	6.0	2.2
Y2-712-2	0.55	0.75	380	1.4	2880	74.0	0.82	2.2	6.0	2.2
Y2-801-2	0.75	1	380	1.8	2890	75.0	0.83	2.2	6.0	2.2
Y2-802-2	1.1	1.5	380	2.6	2900	76.2	0.84	2.2	7.0	2.2
Y2-905-2	1.5	2	380	3.4	2900	18.5	0.84	2.2	7.0	2.2
Y2-90L-2	2.2	3	380	4.8	2930	81.0	0.85	2.2	7.0	2.2
Y2-100L-2	3.0	4	380	6.3	2930	82.6	0.87	2.2	7.0	2.2
Y2-112M-2	4.0	5.5	380	8.1	2930	84.2	0.88	2.2	8.0	2.2
Y2-132S1-2	5.5	7.5	380	11	2940	85.7	0.88	2.2	8.0	2.2
Y2-132S2-2	7.5	10	380	15	2950	87.0	0.88	2.2	8.0	2.2
Y2-160M1-2	11.0	15	380	21.3	2950	88.4	0.89	2.0	8.0	2.2
Y2-160M2-2	15.0	20	380	28.7	2970	89.4	0.89	2.0	8.0	2.2
Y2-160L-2	18.5	25	380	34.6	2970	90.0	0.90	2.0	8.0	2.2
Y2-180M2-2	22.0	30	380	40.9	2970	90.5	0.90	2.0	8.0	2.2
Y2-200L1-2	30.0	40	380	55.4	2970	91.4	0.90	2.0	8.0	2.2
Y2-200L2-2	37.0	50	380	67.7	2980	92.0	0.90	2.0	8.0	2.2
Y2-225M-2	45.0	60	380	82.3	2980	92.5	0.90	1.8	8.0	2.2
Y2-250M-2	55	75	380	101	2980	93.0	0.90	1.8	7.0	2.2
Y2-280S-2	75	100	380	134	2980	93.6	0.90	1.8	7.0	2.2
Y2-280M-2	90	125	380	160	2980	93.9	0.91	1.8	7.0	2.2
Y2-315S-2	110	150	380	195	2980	94.0	0.91	1.8	6.8	2.2
Y2-315M-2	132	180	380	233	2980	94.5	0.91	1.8	6.8	2.2
Y2-315L1-2	160	220	380	279	2980	94.6	0.91	1.8	6.8	2.2
Y2-315L2-2	200	270	380	348	2980	94.8	0.92	1.8	6.8	2.2
Y2-355M-2	250	340	380	433	2980	95.2	0.92	1.6	7.0	2.2
Y2-355L-2	315	430	380	544	2980	95.4	0.92	1.6	7.1	2.2
1500 RPM (4 polos)										
Y2-631-4	0.12	0.16	380	0.44	1400	57	0.72	2.2	4.5	2.2
Y2-632-4	0.18	0.25	380	0.62	1400	60	0.73	2.2	4.5	2.2
Y2-711-4	0.25	0.33	380	0.79	1400	65	0.74	2.2	5.5	2.2
Y2-712-4	0.37	0.5	380	1.12	1400	67	0.75	2.2	5.5	2.2
Y2-801-4	0.55	0.75	380	1.6	1400	71	0.75	2.2	5.5	2.2
Y2-802-4	0.75	1	380	2.0	1400	73	0.77	2.2	6.0	2.2
Y2-905-4	1.1	1.5	380	2.9	1400	75	0.77	2.2	6.0	2.2
Y2-90L-4	1.5	2	380	3.7	1400	78	0.79	2.2	6.0	2.2
Y2-100L1-4	2.2	3	380	5.1	1420	80	0.81	2.2	7.0	2.2
Y2-100L2-4	3.0	4	380	6.8	1420	82	0.82	2.2	7.0	2.2
Y2-112M-4	4.0	5.5	380	8.8	1440	84	0.82	2.2	7.0	2.2
Y2-132S-4	5.5	7.5	380	11.8	1440	85	0.83	2.2	7.0	2.2
Y2-132M-4	7.5	10	380	15.5	1440	87	0.84	2.0	7.0	2.0
Y2-160M-4	11.0	15	380	22.3	1460	88	0.85	2.0	7.0	2.2
Y2-160L-4	15.0	20	380	30	1460	89	0.85	2.0	7.0	2.2
Y2-180M-4	18.5	25	380	36.4	1470	90.5	0.85	2.2	7.5	2.2
Y2-180L-4	22.0	30	380	43.1	1470	91	0.85	2.2	7.5	2.2
Y2-200L-4	30.0	40	380	57.4	1470	92	0.86	2.2	7.5	2.2
Y2-225S-4	37.0	50	380	69.9	1480	92.5	0.87	2.2	7.5	2.2
Y2-225M-4	45.0	60	380	84.7	1480	92.8	0.87	2.2	7.5	2.2
Y2-250M-4	55	75	380	103	1480	93.0	0.89	2.2	7.0	2.2
Y2-280S-4	75	100	380	140	1480	93.8	0.86	2.2	7.0	2.2
Y2-280M-4	90	125	380	167	1490	94.2	0.86	2.2	7.0	2.2
Y2-315S-4	110	150	380	201	1490	94.5	0.87	2.1	6.9	2.2
Y2-315M-4	132	180	380	240	1490	94.8	0.87	2.1	6.9	2.2
Y2-315L1-4	160	220	380	287	1490	94.9	0.88	2.1	6.9	2.2
Y2-315L2-4	200	270	380	359	1490	95.0	0.88	2.3	6.9	2.2
Y2-355M-4	250	340	380	443	1485	95.3	0.88	2.3	6.8	2.2
Y2-355L-4	315	430	380	556	1485	95.6	0.89	2.2	6.9	2.2

Modelo	Potencia (kw) (hp)		Voltaje (V)	Corriente (A)	Velocidad (r.p.m.)	EFF (%)	Factor Potencia	Rotor Cerrado	Rotor Cerrado	Max Cupla
								Cupla	Corriente	
1000 RPM (6 polos)										
Y2-711-6	0.18	0.25	380	0.74	900	56	0.66	2.2	4.0	2.2
Y2-712-6	0.25	0.33	380	0.94	900	59	0.68	2.0	4.0	2.2
Y2-801-6	0.37	0.5	380	1.3	900	62	0.70	2.0	5.0	2.2
Y2-802-6	0.55	0.75	380	1.8	900	65	0.72	2.0	5.0	2.2
Y2-905-6	0.75	1	380	2.3	910	69	0.72	2.0	5.5	2.2
Y2-90L-6	1.1	1.5	380	3.2	910	72	0.73	2.0	5.5	2.2
Y2-100L-6	1.5	2	380	3.9	940	76	0.76	2.0	5.5	2.2
Y2-112M-6	2.2	3	380	5.6	940	79	0.76	2.0	6.5	2.2
Y2-132S-6	3.0	4	380	7.4	960	81	0.76	2.0	6.5	2.2
Y2-132M1-6	4.0	5.5	380	9.7	960	82	0.76	2.0	6.5	2.2
Y2-132M2-6	5.5	7.5	380	12.9	960	84	0.77	2.0	6.5	2.0
Y2-160M	7.5	10	380	16.5	970	86	0.80	2.0	6.5	2.0
Y2-160L-6	11.0	15	380	24.1	970	87.5	0.79	2.0	6.5	2.0
Y2-180L-6	15.0	20	380	31.5	970	89	0.81	2.0	7.0	2.0
Y2-200L1-6	18.5	25	380	38.5	970	90	0.81	2.0	7.0	2.0
Y2-200L2-6	22.0	30	380	44.6	970	90	0.83	2.0	7.0	2.0
Y2-225M-6	30.0	40	380	59.3	980	91.5	0.84	2.0	7.0	2.1
Y2-250M-6	37.0	50	380	71.0	980	92.0	0.86	2.0	7.0	2.1
Y2-280S-6	45.0	60	380	86.0	980	92.5	0.86	2.0	7.0	2.0
Y2-280M-6	55	75	380	105	980	92.8	0.86	2.0	7.0	2.0
Y2-315S-6	75	100	380	141	990	93.5	0.86	2.0	7.0	2.0
Y2-315M-6	90	125	380	169	990	93.8	0.86	2.0	7.0	2.0
Y2-315L1-6	110	150	380	206	990	94.0	0.86	2.0	6.7	2.0
Y2-315L2-6	132	180	380	244	990	94.2	0.87	2.0	6.7	2.0
Y2-355M1-6	160	220	380	292	990	94.5	0.88	1.9	6.7	2.0
Y2-355M2-6	200	270	380	365	990	94.7	0.88	1.9	6.7	2.0
Y2-355L-6	250	340	380	455	990	94.9	0.88	1.9	6.7	2.0
750 RPM (8 polos)										
Y2-801-8	0.18	0.25	380	0.88	680	51	0.61	1.8	3.3	1.9
Y2-802-8	1.25	0.33	380	1.15	680	54	0.61	1.8	3.3	1.9
Y2-905-8	0.37	0.5	380	1.5	680	62	0.61	1.8	4.0	1.9
Y2-90L-8	0.55	0.75	380	2.2	700	63	0.61	1.8	4.0	2.2.0
Y2-100L1-8	0.75	1	380	2.4	700	71	0.67	1.8	4.0	2.0
Y2-100L2-8	1.1	1.5	380	3.3	700	73	0.69	1.8	5.0	2.0
Y2-112M-8	1.5	2	380	4.5	700	75	0.68	1.8	5.0	2.0
Y2-132S-8	2.2	3	380	6.0	710	78	0.71	2.0	6.0	2.0
Y2-132M-8	3.0	4	380	7.9	710	79	0.73	2.0	6.0	2.0
Y2-160M1-8	4.0	5.5	380	10.2	720	81	0.73	2.0	6.0	2.0
Y2-160M2-4	5.5	7.5	380	13.6	720	83	0.74	2.0	6.0	2.0
Y2-160L-8	7.5	10	380	17.7	720	85.5	0.75	2.0	6.0	2.0
Y2-180L-8	11.0	15	380	25.1	730	87.5	0.76	2.0	6.5	2.0
Y2-200L-8	15.0	20	380	34.0	730	88	0.76	2.0	6.5	2.0
Y2-225S-8	18.5	25	380	40.6	740	90.0	0.76	1.9	6.6	2.0
Y2-225M-8	22.0	30	380	47.4	740	90.5	0.78	1.9	6.6	2.0
Y2-250M-8	30.0	40	380	64.0	740	91.0	0.79	1.9	6.6	2.0
Y2-280S-8	37.0	50	380	78.0	740	91.5	0.79	1.9	6.6	2.0
Y2-280M-4	45.0	60	380	94.0	740	92.0	0.79	1.9	6.6	2.0
Y2-315S-8	55	75	380	111	740	92.8	0.81	1.8	6.6	2.0
Y2-315M-8	75	100	380	151	740	93.0	0.81	1.8	6.6	2.0
Y2-315L1-8	90	125	380	178	740	93.8	0.82	1.8	6.6	2.0
Y2-315L1-8	110	150	380	217	740	94.0	0.82	1.8	6.4	2.0
Y2-315L2-8	132	180	380	161	740	93.7	0.82	1.8	6.4	2.0
Y2-355M2-8	160	220	380	313	740	94.2	0.82	1.8	6.4	2.0
Y2-355L-8	200	270	380	388	740	94.5	0.83	1.8	6.4	2.0
600 RPM (10 polos)										
Y2-315S-10	45	60	380	100	590	91.5	0.75	1.5	6.2	2.0
Y2-315M-10	55	75	380	121	590	92	0.75	1.5	6.2	2.0
Y2-315L1-10	75	100	380	162	590	92.5	0.76	1.5	6.2	2.0
Y2-315L2-10	90	125	380	191	590	93	0.77	1.5	6.2	2.0
Y2-355M1-10	110	150	380	230	590	93.2	0.78	1.3	6.0	2.0
Y2-355M2-10	132	180	380	275	590					